

How to Select the Right Restaurant POS Software

Follow our three steps to identify your restaurant point of sale needs, equip yourself with tools to evaluate various restaurant POS software packages, and make a “best-fit” purchase decision. At the end of this guide, we include information and a features comparison of best-selling POS restaurant software packages to simplify the buying process.

STEP 1: Define Your Deployment Needs

Number of Locations & Number of POS Registers Per Location

POS restaurant software is manufactured for various deployment scenarios. Restaurant software manufacturers may design software for **single pos register installations**, or offer versions suitable for **multiple pos registers**, and even **multiple restaurant locations**. You can vastly narrow your choices just by understanding your locational needs.

Network Infrastructure for Multiple POS Registers and/or Multiple Locations

Operating system and hardware requirements vary among software packages and will affect the cost of implementing your restaurant POS system. While one software package might support a Windows peer-to-peer POS station set up, another may require a Windows Server operating system for multiple POS registers or restaurant locations. The hardware and costs for networking two or more point-of-sale registers running the same software at a single location or between multiple locations should be factored into the budget.

POS Hardware Compatibility

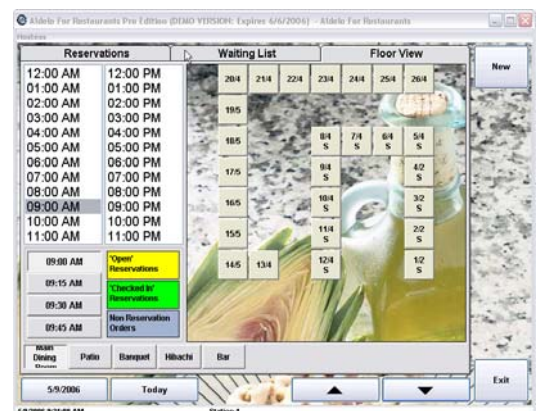
POS hardware compatibility varies among software packages. Be sure to consult the software’s hardware requirements prior to buying [touch screen computers](#), [receipt printers](#), [pole displays](#), [card readers](#), [cash drawers](#), and [barcode scanners](#). If you own existing POS hardware components, be aware that your new restaurant software may not be compatible.

Whether you need just one POS register or multiple POS stations, consider buying [Complete Restaurant POS Systems](#) which bundle restaurant software with all required hardware, pre-configured for guaranteed compatibility. If you opt to purchase restaurant software separately from POS hardware, consult a reseller about the various operating requirements for the POS software packages you are evaluating, and find out if your reseller offers [Onsite Installation Services](#).

STEP 2: Define Critical & Secondary Features

Identify the Features You Need

Determine the critical functionality you need in a restaurant POS software package. Use our [Features Checklist](#) to identify features commonly found in restaurant POS software packages, or build your own list. Note which of these features are mission-critical, secondary needs, and which features are unnecessary.



**Aldelo Pro for Restaurants
Includes Reservations Management**

STEP 2: Define Critical & Secondary Features *(Continued)*

Features Checklist

Restaurant Software Features	Critical	Secondary	Do Not Need
Standard Features			
Compatible with Existing POS Hardware			
Customizable Touch Screen Operation			
Supports Multiple Locations			
Caller ID Integration			
Supports Multiple Companies			
12-Months Support & Upgrades Included			
Multi-lingual User Interface			
Supports Multiple Currencies			
Supports Kitchen Order Printing			
Supports Kitchen Video Display			
Supports Barcode Scanning			
Prints Barcode Labels			
Supports Scale Integration			
Integrated Credit Card Processing			
Supports Gift Cards/Gift Certificates			
User Level Security			
User Defined Menus & Modifiers			
Automatic (Time of Day) Menu Item/Price Changes			
Edit Menus in Real Time			
Dine-In Features			
Visual Table Layout			
Reservations Management			
Separate Bar Menu			
Separate Bar Tab			
Split/ Combine Checks			

STEP 2: Define Critical & Secondary Features (Continued)

Restaurant Software Features	Critical	Secondary	Do Not Need
Delivery Features			
Take-out/Delivery Service Management			
Visual Delivery Map Integration			
Delivery Dispatch & Routing			
Back Office & HR Features			
Inventory Control			
Vendor Tracking and/or Purchase Orders			
Vendor Tracking			
Tracks House Accounts			
Employee Scheduling/ Timecard Management			
Financial Reporting			
Export Reports to Excel			
Export Data to Quickbooks			
Schedule Automatic Data Backup			

STEP 3: Evaluate & Compare Software Packages

Contact Industry Resources for Recommendations

Contact a [reputable reseller](#) with expertise in the POS industry. Based on the system requirements and features criteria you've identified, ask them to recommend a variety of restaurant pos software packages for evaluation. Be sure to obtain any restaurant pos software demonstration or trial versions from the reseller. These are usually downloadable from your reseller's website.

If desired, directly contact the software manufacturer for names of restaurateurs who use their POS software. Contact those references for their feedback on ease of installation, usability, features, and performance.

Understand Software Manufacturer's Support, Upgrade & Return Policies

Support and upgrade policies vary greatly among POS software manufacturers. While one may require a paid support contract with purchase, another manufacturer may include up to a year of free support with purchase. Some software manufacturers only include software patches

STEP 3: Evaluate & Compare Software Packages (Continued)

(commonly known as “bug fixes”) for current versions with purchase, while others offer full version upgrades for the first year. Be aware that most software companies do not accept returns on software and do not guarantee the fitness of their software for any particular purpose; neither do software resellers. This is an industry standard rule, making your evaluation of the free POS software trial version an essential step to ensure satisfaction.

Install Trial Versions to Evaluate Features & User Interface

Once you’ve narrowed your choices down to only POS restaurant software packages fitting your critical features criteria (and hopefully some secondary needs), install the demonstration versions on your PC. Evaluate each software’s depth of functionality for those features. In addition, consider ease of use and the intuitiveness of the user interface. Restaurants with large staff and high turnover may place greater weight on ease of use to save the expense and time associated with training new users.

Once you’ve had a hands-on evaluation of critical features and usability, its time to narrow your choice and make a purchase decision. Revisit the software system requirements and have a list of final questions ready for your reseller.

Restaurant POS Software at POSGuys.com

POSGuys.com offers a variety of restaurant POS software packages including:

Aldelo Pro for Restaurants

A full-featured restaurant pos software offering dine-in, delivery, and take out functionality with extensive inventory, recipe and menu control, employee scheduling, and financial reporting. Aldelo Pro is suitable for multiple POS stations, multiple locations, and a multi-lingual staff—the application has built-in support for English, Spanish, Traditional Chinese and Simplified Chinese. It is also fully programmable (outside of the application) to support any language of your choice.

Aldelo Lite for Restaurants

This is a scaled-down version of Aldelo Pro for take-out and delivery style establishments.

Aldelo Lite does not include the inventory and



Aldelo Pro for Restaurants

Restaurant POS Software at POSGuys.com (Continued)

employee management functionality found in the Pro version, but offers superior functionality for counter service and delivery, especially where multiple POS stations are deployed. Aldelo Lite also exhibits identical multi-lingual capabilities as Aldelo Pro.

Amigo POS

A restaurant pos software designed with an intuitive, easy-to-use interface, Amigo POS features full-service dine-in, take-out, and



Amigo POS

delivery functionality and includes a data interface to Quickbooks Pro. Job-type user security and system scalability are other top selling points for Amigo POS. Suitable for single station, multiple station, or multiple location installations.



Restaurant Pro Express

Manufactured by PC America, this POS restaurant software for fine dining, quick service, and delivery operations offers inventory control, food cost and use analysis, and the ability to view and share data from multiple locations.

Restaurant Pro Express



Plexis POS

Plexis POS

Best suited to fast-food, counter service, or deli

[Restaurant POS Software at POSGuys.com](#) (Continued)

Check out our handy comparison matrix for the most popular restaurant POS software available at POSGuys.com! Although not exhaustive, this comparison covers major features found in today's POS restaurant software packages.

POSGuys.com Restaurant Software Features Comparison					
Feature	Software Brand				
	ALDELO PRO	ALDELO LITE	AMIGO POS	RESTAURANT PRO EXPRESS	PLEXIS POS
Supports Integrated Credit Card Processing	YES (w/ Aldelo EDC Add-On)	YES (w/ Aldelo EDC Add-On)	YES	YES	YES
Multi-lingual Capabilities	YES	YES	NO	NO	NO
Multi-currency Capabilities	NO	NO	NO	NO	NO
International Taxes Supported	NO	NO	YES (GST, VAT, HST)	NO	NO
Supports Multiple Locations	YES	YES	YES	YES	NO
Supports Multiple Companies	NO	NO	NO	NO	YES
Number of Concurrent Stations	12	12	10	??	10
Database Engine	JET 4.0	JET 4.0	JET 4.0, MS SQL 2000	MS SQL 2005, JET 4.0	dBase
Supported Operating Systems	Win XP Pro/ 2000/ WePOS, Windows Server 2000/2003	Win XP Pro/ 2000/ WePOS, Windows Server 2000/2003	Win XP Pro/ Home	Win 95/98/ME/ NT/2000	Win 98/2000/ XP
Customizable Touch Screen	YES	YES	YES	YES	YES
Kitchen Order Printing	YES	YES	YES	YES	YES
Kitchen Display Integration	ADD-ON Purchase	ADD-ON Purchase	NO	YES	YES
User-Level Security	YES	YES	YES	YES	YES
User Defined Menus & Modifiers	YES	YES	YES	YES	Limited
Automatic (Time of Day) Menu Item/Price Changes	YES	YES	YES	YES	YES

[Restaurant POS Software at POSGuys.com](#) (Continued)

POSGuys.com Restaurant Software Features Comparison (continued)					
Feature	Software Brand				
	ALDELO PRO	ALDELO LITE	AMIGO POS	RESTAURANT PRO EXPRESS	PLEXIS POS
Edit Menus in Real Time	YES	YES	YES	YES	YES
Menu Recipe Control	YES	NO	YES	YES	NO
Dine In Functionality	YES	NO	YES	YES	Limited
Visual Table Layout Management	YES	NO	YES	YES	NO
Reservations Management	YES	NO	YES	NO	NO
Separate Bar Tab	YES	NO	YES	NO	NO
Separate Bar Menu	YES	NO	YES	YES	YES
Take-out/Delivery Service Management	YES	YES	YES	YES	Limited
Visual Delivery Map Integration	YES	YES	NO	NO	NO
Delivery Dispatch & Routing	YES	YES	YES	YES	YES
Split/Combine Checks	YES	YES	YES	YES	NO
Gift Cards/Gift Certificates	YES	NO	YES	YES	YES
Tracks House Accounts	YES	NO	YES	YES	YES
Inventory Management	YES	NO	YES	YES	YES
Vendor Tracking and/or Purchase Orders	YES	NO	NO	YES	YES
Employee Scheduling/ Timecard Management	YES	NO	YES	YES	NO
Financial Reporting	YES	YES	YES	YES	YES
Export Report Data to Excel	YES	YES	YES	NO	NO

[Restaurant POS Software at POSGuys.com](#) (Continued)

POSGuys.com Restaurant Software Features Comparison (continued)					
Feature	Software Brand				
	ALDELO PRO	ALDELO LITE	AMIGO POS	RESTAURANT PRO EXPRESS	PLEXIS POS
Export Data to Quickbooks	YES	YES	Limited	Limited	NO
Schedule Automatic Data Backup	YES	YES	YES	NO, Manual Backup Only	NO, Manual Backup Only
Integrated Barcode Label Printing	YES	YES	NO	YES	YES
Supports Barcode Scanning	YES	YES	YES Serial Only	YES	YES
Supports Scale Integration	YES	YES	YES	YES	YES
Caller ID Integration	YES	YES	YES	YES	YES
Manufacturer Support Policy	Free Support for First 30 Days	Free Support for First 30 Days	Two 30-minute support incidents within 30 days of purchase. One Year Free Email Support	Requires Annual Support & Upgrade Contract Purchase	1 Year Free Phone Support for Software Installation Only. Software Operation & Configuration Q&A Requires Additional Purchase
Manufacturer Software Upgrade Policy	Free Upgrades for First 30 Days	Free Upgrades for First 30 Days	Free Version Patches Only. New Version Release Requires Purchase	Requires Annual Support & Upgrade Contract Purchase	Free Upgrades & Updates for 1 Year
Return Policy	No Returns	No Returns	No Returns	No Returns	No Returns

Features Comparison is compiled from software manufacturers' information. POSGuys.com does not guarantee the accuracy of the information contained herein, nor does it guarantee fitness of software for a particular purpose. Information contained herein is subject to change without notice. For direct questions regarding software functionality or compatibility, please contact the software manufacturer.