

What is Fishbowl Inventory?

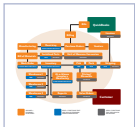
Advanced inventory management and manufacturing software designed specifically for mid-market QuickBooks® users.

Ideal Fishbowl Customer

- Midsize company with 10 to 200 employees
- Annual sales: \$2 million to \$100+ million
- Multiple warehouses or production facilities
- QuickBooks user seeking advanced inventory control and manufacturing tools
- Sage (or similar software) user wanting to return to QuickBooks
- 5 to 30 Fishbowl users (can handle up to 75 concurrent users)

How Does Fishbowl Work with QuickBooks?

1. During the initial integration, Fishbowl downloads all the customer, vendor, inventory, and company information from QuickBooks directly into the Fishbowl database.
2. After integration, Fishbowl manages all sales, purchasing, manufacturing, and inventory functions.
3. QuickBooks essentially becomes the accounting module of Fishbowl. When products are sold, Fishbowl updates inventory records and alerts QuickBooks to create invoices, bills and make other accounting adjustments.



For a quick look at the features of Fishbowl, Fishbowl Mobile Warehouse and SalesPoint, see the diagram on the next page.

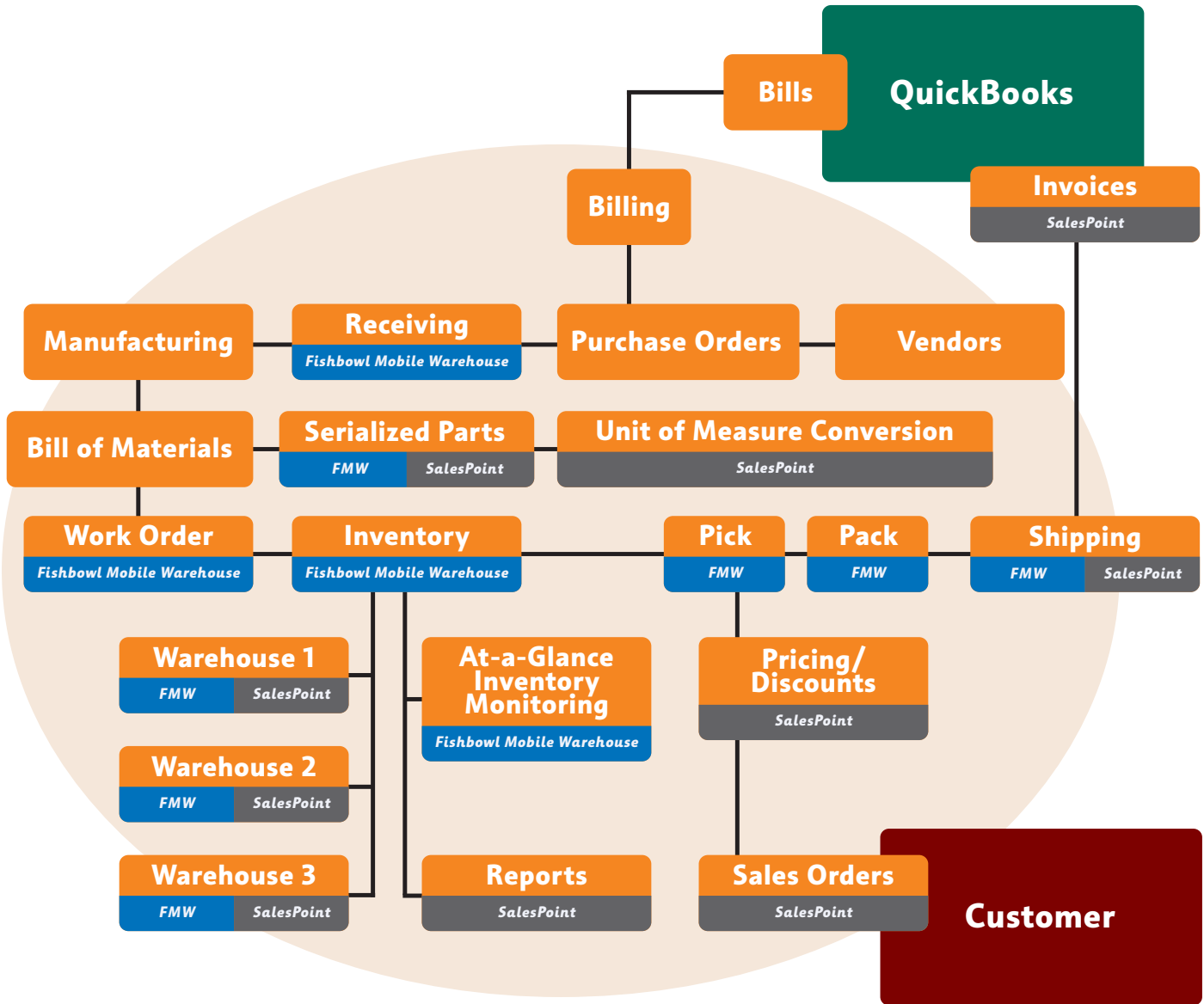
FEATURE COMPARISON

CAPABILITIES	QUICKBOOKS ONLY †	QUICKBOOKS WITH FISHBOWL
Accounting methods	Average costing and FIFO	LIFO, FIFO, standard & average costing
Barcode printing & scanning	None	Supported
Bill of materials	Assemblies	Multiple levels and stages
Consignment	None	Supported
Displays work-in-process	None*	Supported
Drop shipping	None*	Supported
Locations	Sites	Multiple locations supported
Manufacture orders and work orders	Assemblies	Assembly, disassembly and custom
Multiple location part tracking	Some (limited)	More than you'll ever need
Part tracking	Lot or serial	Serial, lot & revision #'s, exp. date & custom fields
Product/kit configurator	None	Unlimited
Remote access	VPN only*	Any network connection
RMA	None	Supported
Transfer orders	None	Supported
User access rights	Role-based	Role-based and granular feature-based
Variable pricing and discounting	Percent, amount	Percent, amount & group and cost-plus pricing
Warehouses	None	Supported

† QuickBooks Pro, Premier and Enterprise

* Enterprise has some functionality for these features

**Sign up for a personalized product overview by calling 1.800.774.7085 ext. 2
or visit our website at www.fishbowlinventory.com**



ORANGE = FISHBOWL FUNCTIONS

BLUE = FUNCTIONS THAT ARE ALSO IN FISHBOWL MOBILE WAREHOUSE

GRAY = FUNCTIONS THAT ARE ALSO IN SALESPOINT

Sign up for a personalized product overview by calling 1.800.774.7085 ext. 2 or visit our website at www.fishbowlinventory.com