



QuickScan[®] QS6500
Handheld Bar Code Scanner



Quick Reference Guide

Datalogic Scanning, Inc.
959 Terry Street
Eugene, Oregon 97402
Telephone: (541) 683-5700
Fax: (541) 345-7140

An Unpublished Work - All rights reserved. No part of the contents of this documentation or the procedures described therein may be reproduced or transmitted in any form or by any means without prior written permission of Datalogic Scanning, Inc. or its subsidiaries or affiliates ("Datalogic" or "Datalogic Scanning"). Owners of Datalogic products are hereby granted a non-exclusive, revocable license to reproduce and transmit this documentation for the purchaser's own internal business purposes. Purchaser shall not remove or alter any proprietary notices, including copyright notices, contained in this documentation and shall ensure that all notices appear on any reproductions of the documentation.

Should future revisions of this manual be published, you can acquire printed versions by contacting your Datalogic representative. Electronic versions may either be downloadable from the Datalogic website (www.scanning.datalogic.com) or provided on appropriate media. If you visit our website and would like to make comments or suggestions about this or other Datalogic publications, please let us know via the "Contact Datalogic" page.

Disclaimer

Datalogic has taken reasonable measures to provide information in this manual that is complete and accurate, however, Datalogic reserves the right to change any specification at any time without prior notice.

Datalogic is a registered trademark of Datalogic S.p.A. in many countries and the Datalogic logo is a trademark of Datalogic S.p.A. All other brand and product names referred to herein may be trademarks of their respective owners.

This product may be covered by one or more of the following patents: 6,293,467 • 6,612,495 • 6,705,527 • Other Patents Pending

Datalogic Scanning, Inc.

QUICKSCAN[®] END USER LICENSE AGREEMENT

Notice to End User: The Datalogic Product you have acquired contains embedded Software, which is integral to the product's operation. This Software is being provided to you under license, subject to the terms and conditions of this Agreement. If you use the Datalogic Product, you will be deemed to have accepted the terms and conditions of this Agreement. If you do not intend to be bound to the terms of this Agreement, Datalogic is not willing to license the Software to you, you may not use the Datalogic Product or the Software, and you must contact the party from whom you acquired the Datalogic Product for instructions.

This End User Software License Agreement ("Agreement") is a legally binding agreement governing the licensing of the Software and Documentation by Datalogic Scanning Holdings, Inc. and its subsidiaries and affiliates ("Datalogic") to the entity or person who has purchased or otherwise acquired a Datalogic Product ("End User"). For purposes of this Agreement, any software that is associated with a separate end-user license agreement is licensed to you under the terms of that license agreement. Datalogic and End User hereby agree as follows:

1. Definitions.

- 1.1 "Documentation" means materials such as user's guides, program reference guides, quick reference guides, manuals, or similar materials associated with or related to the Datalogic Product, whether in printed, "online", or other form.
- 1.2 "Proprietary Information" means: (a) source code, object code, software, documentation, and any related internal design, system design, data base design, algorithms, technology, technical data or information, implementation techniques, and trade secrets related to the Software, (b) any other trade secrets marked appropriately or identified as proprietary or confidential, and (c) any information that End User, under the circumstances, should recognize as confidential. Proprietary Information does not include any information that the receiving party can establish was (1) in the public domain, (2) already in the receiving party's possession or rightfully known prior to receipt, (3) rightfully learned from a third party not in violation of any other's proprietary rights, or (4) independently developed without access to Proprietary Information.
- 1.3 "Datalogic Product" means the Datalogic[®] Quickscan[®] series scanner product, including all embedded Software in and all Documentation related to such product, which has been purchased or otherwise acquired by End User, whether obtained directly or indirectly from Datalogic.
- 1.4 "Software" means any software or computer programs of Datalogic or its third party licensors in machine readable form which is embedded in the Datalogic Product, whether obtained directly or indirectly from Datalogic, including any replacement, update, upgrade, enhancement or modification.

2. Scope Of License Granted.

- 2.1 Datalogic grants to End User a non-exclusive, non-transferable, perpetual license to use the Software, solely on the Datalogic Product in which it is embedded ("designated Datalogic Product"), in machine-readable form only, solely for End User's internal business purposes. This Agreement does not convey ownership of the Software to End User. Title to the Software shall be and remain with Datalogic or the third party from whom Datalogic has obtained a licensed right. As used in this Agreement, the term "purchase" or its equivalents when applied to the Software shall mean "acquire under license." End User is not entitled to receipt or use of the source code to any Software.
- 2.2 End User shall not copy, modify, decompile, disassemble, reverse engineer, or otherwise reproduce or remanufacture the Software, whether modified or unmodified, nor sell, assign, sublicense, distribute, lend, rent, give, or otherwise transfer the Software to any other person or organization, for purposes other than as expressly provided in this Agreement, without Datalogic's prior written consent.

3. Transfers, Support.

- 3.1 Any copying, installing, reproduction, remanufacture, reverse engineering, electronic transfer, or other use of the Software on other than the designated Datalogic Product will be a material breach of this Agreement. However, Datalogic may elect not to terminate this Agreement or the granted licenses, but instead may elect to notify End User that End User is deemed to have ordered and accepted a license for each breaching use. End User shall pay Datalogic the applicable list price for such licenses as of the date of such breach.
- 3.2 End User shall not sell, assign, sublicense, distribute, lend, rent, give, or otherwise transfer the Datalogic Product to any third party unless such third party agrees with Datalogic in writing to be bound by the terms and conditions of this Agreement. Any such transfer of the Datalogic Product absent such agreement shall be null and void.
- 3.3 End User may obtain support for Software from Datalogic at Datalogic's standard support fees and under Datalogic's standard support terms and conditions in effect at the time the support is requested.

4. Intellectual Property.

End User acknowledges that the Software constitutes valuable trade secrets of Datalogic or Datalogic's third party licensors and that the Software is protected by intellectual property laws and treaties. The license set forth in this Agreement does not transfer to End User any ownership of Datalogic's or its third party licensors' copyrights, patents, trademarks, service marks, trade secrets, or other intellectual property rights and End User shall have no right to commence any legal actions to obtain such rights. End User shall not remove, modify, or take any other action that would obscure any copyright, trademark, patent marking, or other intellectual property notices contained in or on the Datalogic Product.

5. Proprietary Information.

- 5.1 End User acknowledges that Proprietary Information is the confidential, proprietary, and trade secret property of Datalogic and Datalogic's third party licensors and End User acquires no right or interest in any Proprietary Information.
- 5.2 End User shall not disclose, provide, or otherwise make available the Proprietary Information of Datalogic or its third party licensors to any person other than End User's authorized employees or agents who are under confidentiality agreement, and End User shall not use the Proprietary Information other than in conjunction with use of the Datalogic Product exclusively for End User's internal business purposes. End User shall take steps to protect the Proprietary Information no less securely than if it were End User's own intellectual property.
- 5.3 The provisions of this Proprietary Information Section shall survive and continue for five (5) years after the termination of this Agreement.

6. Limited Warranty.

- 6.1 Datalogic warrants that, under normal use and operation, the Datalogic Product will conform substantially to the applicable Documentation for the period specified in the Documentation. During this period, for all reproducible nonconformities for which Datalogic has been given written notice, Datalogic will use commercially reasonable efforts to remedy nonconformities verified by Datalogic. End User agrees to supply Datalogic with all reasonably requested information and assistance necessary to help Datalogic in remediating such nonconformities. For all defects reported to Datalogic within the warranty period, Datalogic's liability is limited to providing End User with one copy of corrections or responding to End User's problem reports according to Datalogic's standard assistance practices. Datalogic does not warrant that the product will meet End User's requirements or that use of the product will be uninterrupted or error free, or that Datalogic's remedial efforts will correct any nonconformance. This limited warranty does not cover any product that have been subjected to damage or abuse, whether intentionally, accidentally, or by neglect, or to unauthorized repair or unauthorized installation, and shall be void if End User modifies the product, uses the product in any manner other than as established in the Documentation, or if End User breaches any of the provisions of this Agreement.
- 6.2 EXCEPT AS PROVIDED IN THIS AGREEMENT, THE DATALOGIC PRODUCT IS PROVIDED "AS IS" AND DATALOGIC MAKES NO WARRANTIES OF ANY KIND, EXPRESS OR IMPLIED, WRITTEN OR ORAL, WITH RESPECT TO THE PRODUCT, AND SPECIFICALLY DISCLAIMS THE IMPLIED WARRANTIES OF MERCHANTABILITY AND FITNESS FOR A PARTICULAR PURPOSE.

7. Infringement.

- 7.1 Datalogic will defend End User against any claim in a lawsuit that the Datalogic Product furnished hereunder infringe a United States patent or copyright of a third party and Datalogic will pay any damages finally awarded against End User by a court of competent jurisdiction that are attributable to such claim or will pay End User's part of any settlement that is attributable to such claim, provided, that 1) End User notifies Datalogic promptly in writing of the claim, 2) Datalogic controls the defense or settlement of the claim, and 3) End User cooperates fully with Datalogic in such defense or settlement. All notices of a claim should be sent to Datalogic Scanning, Inc., Legal Department, 111 SW Fifth Ave. Suite 4100, Portland, OR 97204-3644.
- 7.2 In the defense or settlement of any such claim, Datalogic may, at its option, 1) procure for End User the right to continue using the Datalogic Product, 2) modify the Datalogic Product so that it becomes non-infringing, 3) replace the Datalogic Product with an equivalent product not subject to such claim, or 4) provide End User an opportunity to return the Datalogic Product and receive a refund of the purchase price paid, less a reasonable allowance for use.
- 7.3 Datalogic shall have no liability to End User for claims of infringement based upon 1) the use of any Datalogic Product in combination with any product which Datalogic has not either furnished or authorized for use with such Datalogic Product 2) the use of any Datalogic Product designed, manufactured, or modified to the specifications of End User, or 3) End User's modification of the Datalogic Product without written authorization from Datalogic.
- 7.4 THE FOREGOING STATES DATALOGIC'S COMPLETE AND ENTIRE OBLIGATION CONCERNING CLAIMS OF PATENT, COPYRIGHT, OR OTHER INTELLECTUAL PROPERTY INFRINGEMENT, CANCELS AND SUPERCEDES ANY PRIOR AGREEMENTS, WHETHER ORAL OR WRITTEN, BETWEEN THE PARTIES CONCERNING SUCH CLAIMS, AND WILL NOT BE MODIFIED OR AMENDED BY ANY PAST, CONTEMPORANEOUS, OR FUTURE AGREEMENTS OR DEALINGS BETWEEN THE PARTIES, WHETHER ORAL OR WRITTEN, EXCEPT AS SET FORTH IN A FUTURE WRITING SIGNED BY BOTH PARTIES.

8. Limitation Of Liability.

EXCEPT AS PROVIDED IN SECTION 7, DATALOGIC SHALL NOT BE LIABLE FOR ANY CLAIMS AGAINST END USER BY ANY OTHER PARTY. IN NO EVENT SHALL DATALOGIC'S LIABILITY FOR DAMAGES, IF ANY, WHETHER BASED UPON CONTRACT, TORT (INCLUDING NEGLIGENCE), PRODUCT LIABILITY, STRICT LIABILITY, WARRANTY, OR ANY OTHER BASIS, EXCEED THE PRICE OR FEE PAID BY END USER FOR THE DATALOGIC PRODUCT. UNDER NO CIRCUMSTANCES SHALL DATALOGIC BE LIABLE TO END USER OR ANY THIRD PARTY FOR LOST PROFITS, LOST DATA, INTERRUPTION OF BUSINESS OR SERVICE, OR FOR ANY OTHER SPECIAL, CONSEQUENTIAL, CONTINGENT, INDIRECT, INCIDENTAL, PUNITIVE, EXEMPLARY, OR OTHER SIMILAR DAMAGES, EVEN IF DATALOGIC HAS BEEN ADVISED OF THE POSSIBILITY OF SUCH DAMAGES.

9. Government Restricted Rights: International Use.

- 9.1 Use, duplication, or disclosure of the Software by the U.S. Government is subject to the restrictions for computer software developed at private expense as set forth in the U.S. Federal Acquisition Regulations at FAR 52.227-14(g), or 52.227-19 or in the Rights in Technical Data and Computer Software clause at DFARS 252.227-7013(c)(1)(ii), whichever is applicable.
- 9.2 If End User is using the Datalogic Product outside of the United States, End User must comply with the applicable local laws of the country in which the Datalogic Product is used, with U.S. export control laws, and with the English language version of this Agreement. The provisions of the "United Nations Convention on International Sale of Goods" shall not apply to this Agreement.

10. Termination.

- 10.1 Either party may terminate this Agreement or any license granted under this Agreement at any time upon written notice if the other party breaches any provision of this Agreement.
- 10.2 Upon termination of this Agreement, End User immediately shall cease using any non-embedded software and shall return to Datalogic or destroy all non-embedded software covered by this Agreement, and shall furnish Datalogic with a certificate of compliance with this provision signed by an officer or authorized representative of End User. For

embedded software, End User agrees to sign a waiver prepared by Datalogic concerning further use of the embedded Software. End User's resumed or continued use of the embedded Software after termination shall constitute End User's agreement to be bound by the terms and conditions of this Agreement for such use.

11. General Provisions.

- 11.1 Entire Agreement; Amendment. This document contains the entire agreement between the parties relating to the licensing of the Software and supersedes all prior or contemporaneous agreements, written or oral, between the parties concerning the licensing of the Software. This Agreement may not be changed, amended, or modified except by written document signed by Datalogic.
- 11.2 Notice. All notices required or authorized under this Agreement shall be given in writing, and shall be effective when received, with evidence of receipt. Notices to Datalogic shall be sent to the attention of Contract Administration, Datalogic Scanning, Inc., 959 Terry Street, Eugene, OR 97402, or such other address as may be specified by Datalogic in writing.
- 11.3 Waiver. A party's failure to enforce any of the terms and conditions of this Agreement shall not prevent the party's later enforcement of such terms and conditions.
- 11.4 Governing Law; Venue: This Agreement and the rights of the parties hereunder shall be governed by and construed in accordance with the laws of the State of Oregon U.S.A, without regard to the rules governing conflicts of law. The state or federal courts of the State of Oregon located in either Multnomah or Lane counties shall have exclusive jurisdiction over all matters regarding this Agreement, except that Datalogic shall have the right, at its absolute discretion, to initiate proceedings in the courts of any other state, country, or territory in which End User resides, or in which any of End User's assets are located.
- 11.5 Attorneys' Fees. In the event an action is brought to enforce the terms and conditions of this Agreement, the prevailing party shall be entitled to reasonable attorneys' fees, both at trial and on appeal.

- END -

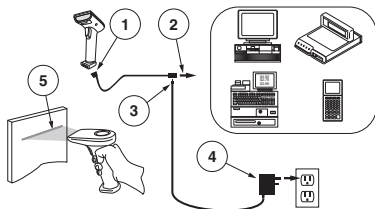
CONTENTS

English	1
Français	5
Deutsch	9
Italiano	13
Instalación	17
Portugues	21
Chinese	25
Japanese	29
Japanese	29
Türkçe	33

NOTES

Installation

The QuickScan[®] QS6500 linear imager is easy to install and use. The following figure shows the steps to perform an installation. Turn off the host computer before connection. Consult the host terminal's manual if necessary.



1. Connect the interface (I/F) cable to the linear imager.
2. Connect the I/F cable to the terminal's communication port.
3. Connect the power cord to the I/F cable connector if required. Linear imagers that use power off the terminal (P.O.T.) do not require a power supply.
4. If required, connect the AC adapter to the wall outlet.
5. To verify operation, point the linear imager at a bar code and pull the trigger. The linear imager should emit a single beep indicating that the label has been scanned successfully.

The linear imager installation is complete.

Power Supply

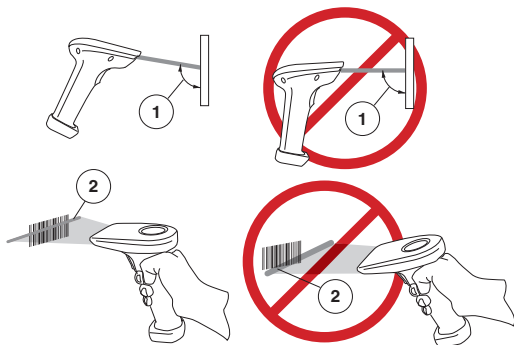
Models require either a Listed class II or class III with a Limited Power Source (LPS). For the safety certification to be valid, class III input power sources must be IEC/EN60950-1 (EN 60335-series, EN 60065 or relevant) approved.

Input: 100 - 240 VAC Output: 9 - 10 VDC

Max. Current: 2.0 A Max. Power: 20 W

How to Scan

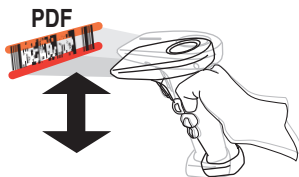
The figure below shows the right and wrong ways to scan a bar code.



1. The linear imager must be pointed at a slight angle to the bar code so that the light reflected off the bar code can be “seen” by the linear imager. Do not hold the linear imager perpendicular to the bar code.
2. The targeting beam must cross the entire label. The linear imager cannot read the bar code data without seeing the entire label.

Scanning PDF417 Bar Codes (PDF models ONLY)

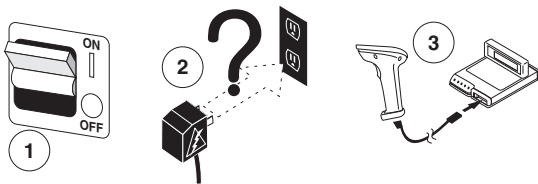
To read a PDF417 bar code, aim the targeting beam at the top of the bar code, and in a smooth motion, scan down through the bar code. You will hear a series of ticks, followed by a final beep when the bar code’s content has been completely decoded. You may need to repeat this process if the PDF code is hard to read.



Troubleshooting

If the linear imager is not operating properly, the following checks should be performed:

1. Since the linear imager can receive its power from the host computer (Power Off the Terminal—P.O.T.), it will not operate without the system power on. If the linear imager uses an external power supply and the external power supply has failed, the linear imager will not operate.
2. If an external power supply is used, exchange the power supply with a known good power supply and retest the linear imager.
3. If the linear imager receives power from the host (P.O.T.), connect the linear imager to a known good host and retest.



4. Verify that the interface cable is securely attached to the host. Consult your technical support personnel or refer to your host system manual to verify the proper connection for the linear imager.
5. Verify that the interface cable is securely attached to the linear imager.
6. Check that the labels are of sufficient quality to be recognized by the linear imager. Wrinkled, smudged, or torn labels can cause the linear imager to not read at all. Scan a known good label to check the linear imager's read operation.

7. Ensure that the linear imager's interface type is compatible with the host terminal by consulting your POS system manual and/or the linear imager's Product Reference Guide found on the CD included with your linear imager.



If the linear imager still does not function properly, contact your local supplier or Datalogic Customer Support Services.

Compliance Statement

This device complies with Part 15 rules. Operation is subject to the following conditions:

1. This device may not cause harmful interference; and
2. This device must accept any interference received, including interference that may cause undesired operation.

This Class A digital apparatus complies with Canadian ICES -003.

Cet appareil numérique de la classe A est conforme à la norme NMB-003 du Canada.

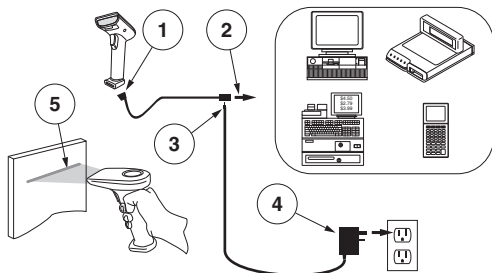
LED Class

CLASS 1 LED PRODUCT
LED KLASSE 1

APPARECCHIO LED CLASSE 1
APPAREIL A LED DE CLASSE 1
EN60825-1/All:1996

Installation

Le lecteur de code à barres Linear Imager QS6500 est un linear imager de poche facile à utiliser. Le schéma suivant illustre la procédure d'installation du imager. Eteignez l'ordinateur avant de connecter le imager. Consultez le manuel de l'ordinateur si nécessaire.



1. Connectez le câble d'interface (I/F) au imager.
2. Connectez le câble I/F au port de communication de l'ordinateur.
3. Connectez le cordon d'alimentation au câble I/F si requis. Les imagers qui sont alimentés par l'ordinateur n'ont pas besoin d'une autre source d'alimentation.
4. Si nécessaire, branchez l'adaptateur CA sur la prise murale.
5. Pour vérifier le fonctionnement, pointez le linear imager sur le code à barres et appuyez sur la gâchette. Le linear imager doit émettre un seul bip indiquant que l'étiquette a été déchiffrée correctement.

L'installation du linear imager est terminée.

Alimentation

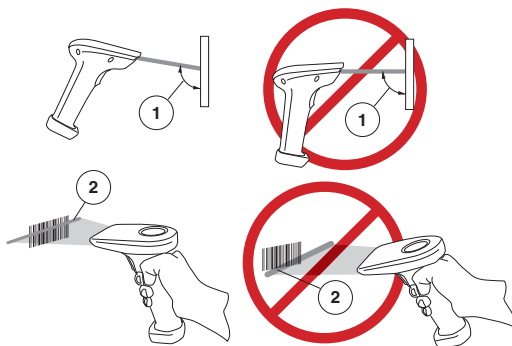
Modèles référencés Classe II et Classe III nécessitant une alimentation externe (Limited Power Source). Afin de valider le certificat de sécurité, l'alimentation classe III doit être certifiée IEC/EN60950-1 (Séries EN 60335, EN 60065 ou équivalent).

Input: 100 - 240 VAC Output: 9 - 10 VDC

Max. Current: 2.0 A Max. Power: 20 W

Procédure de lecture

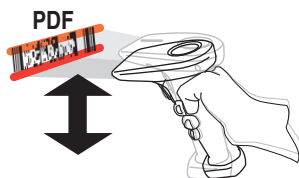
Le dessin ci-dessous montre la bonne et la mauvaise façon de scanner un code à barres.



1. Le linear imager doit être légèrement incliné par rapport au code à barres afin que la lumière réfléchiée sur le code peut être vue par le linear imager. Ne pointez pas le linear imager perpendiculairement au code.
2. Le faisceau lumineux doit balayer l'étiquette entièrement. Le linear imager ne peut pas déchiffrer le code à barres sans avoir entièrement parcouru l'étiquette.

Lecture des codes à barres PDF417 (Modèles PDF seulement)

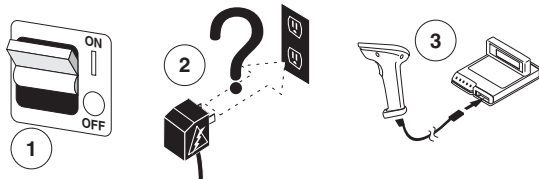
Afin de lire les codes à barres PDF417, le faisceau lumineux doit balayer le code à barres du haut vers le bas. Vous allez entendre une série de signaux sonores, suivie d'un bip final lorsque le code à barres aura été complètement déchiffré. Vous devez répéter ce processus si le PDF est difficilement lisible.



Dépannage

Si le linear imager ne fonctionne pas correctement, effectuez les vérifications suivantes :

1. Si le lecteur est alimenté par l'ordinateur, ce dernier doit être sous tension. Si le linear imager utilise une source d'alimentation externe, et que cette source d'alimentation est défaillante, le linear imager ne peut pas fonctionner.
2. Si le linear imager utilise une source d'alimentation externe, remplacez celle-ci par une autre source dont vous êtes certain du bon fonctionnement et testez à nouveau le linear imager.
3. Si le linear imager est alimenté par l'ordinateur, connectez-le à un autre ordinateur dont vous êtes certain du bon fonctionnement et testez à nouveau le linear imager.



4. Vérifiez que le câble d'interface est solidement relié à l'ordinateur. Contactez un technicien d'assistance ou consultez le manuel de l'ordinateur pour vérifier que la connexion au linear imager est correcte.
5. Vérifiez que le câble d'interface est solidement relié au linear imager.
6. Vérifiez que les étiquettes sont de qualité suffisante pour être reconnues par le linear imager. Des étiquettes ridées, maculées ou déchirées peuvent ne pas être déchiffrées par le linear imager. Procédez à la linear imager d'une étiquette en bon état pour vérifier le fonctionnement du linear imager.

7. Assurez-vous que le type d'interface du linear imager est compatible avec l'ordinateur, en consultant le manuel de ce dernier et/ou le Guide de référence du linear imager inclus dans le CD fourni avec le lecteur.



Si le linear imager ne fonctionne toujours pas correctement, contactez votre revendeur ou le Service après-vente Datalogic.

Interférence de la Radio Fréquence

Cet appareil est conforme au paragraphe 15 du règlement FCC. Les opérations sont soumises aux deux conditions suivantes :

1. Cet appareil ne doit pas causer d'interférences nuisibles, et
2. Il doit accepter n'importe quelle interférence reçue, y compris les interférences pouvant provoquer un dysfonctionnement.

Cet appareil numérique de classe 13 est conforme aux normes Canadiennes de réglementation des équipements provoquant des interférences.

Cet appareil numérique de la classe A est conforme à la norme NMB-003 du Canada.

LED Class

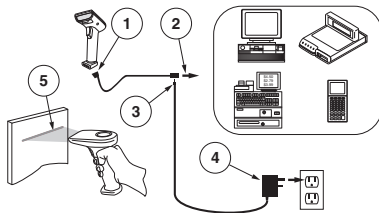
CLASS 1 LED PRODUCT APPARECCHIO LED CLASSE 1

LED KLASSE 1 APPAREIL A LED DE CLASSE 1

EN60825-1/All:1996

Installation

Der QS6500 Linear Imager ist ein Handheld Scanner mit benutzerfreundlichem Design. Anhand folgender Abbildung wird in Schritten gezeigt, wie der Scanner installiert werden soll. Schalten Sie den Hostrechner aus, bevor Sie den linear imager anschließen. Falls notwendig, schlagen Sie im Host-Terminal Handbuch nach.



1. Verbinden Sie die Schnittstelle (I/F) mit dem linear imager.
2. Verbinden Sie das I/F Kabel mit dem Datenübertragungspport im Terminal.
3. Falls notwendig, verbinden Sie das Spannungsversorgungskabel mit dem I/F Kabelanschluß. Imager, die das P.O.T Feature (Spannung vom Terminal) verwenden, benötigen keine Spannungsversorgung.
4. Wenn notwendig, stecken Sie den Wechselstromadapter in die Steckdose.
5. Um diese Anwendung zu überprüfen, zielen Sie mit den linear imager auf einen Barcode und drücken Sie zum Scannen den Abzug. Der linear imager sollte ein einzelnes Signal von sich geben, um zu zeigen, dass der Barcode erfolgreich gescannt wurde.

Der linear imager wurde erfolgreich installiert.

Netzteil

Die Modelle erfordern eine Stromquelle der Klasse II oder III mit einer Leistungsbegrenzung (LPS).

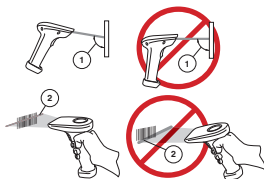
Für eine gültige Sicherheitszertifizierung müssen Klasse III Stromquellen am Eingang nach den Bestimmungen IEC/ EN60950-1 (EN 60335-Serien, EN 60065 oder entsprechenden) zugelassen sein.

Eingang: 100 - 240 VAC Ausgang: 9 - 10 VDC

Max. Strom: 2.0 A Max. Leistung: 20 W

Der Vorgang des Scannens selbst

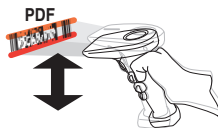
Die untenstehende Zeichnung zeigt, wie man Barcodes richtig und falsch scannt.



1. Der linear imager muß dem Barcode in einem leichten Winkel zuwandt sein, damit das reflektierte Licht des Barcodes vom Linear Imager erfaßt werden kann. Der linear imager darf nicht rechtwinkelig zum Barcode ausgerichtet sein.
2. Der Scanstrahl muß über den gesamten Barcode gehen.. Der linear imager kann keine Barcodedaten lesen, wenn er nicht den gesamten Barcode erfassen kann.

Das Scannen von PDF417 Barcodes (nur PDF-Modelle)

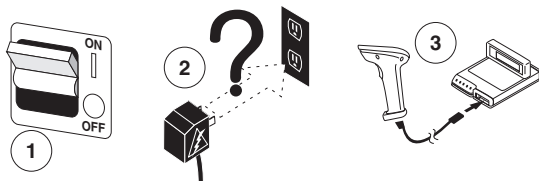
Um einen PDF417-Barocde zu lesen, richten Sie den Scanstrahl an das obere Ende des Barcodes und scannen Sie den Barcode mit einer flüssigen Bewegung nach unten. Sie werden ein Ticken und anschließend einen Piepton zur Bestätigung hören, wenn der Inhalt des Barcodes vollständig dekodiert wurde. Sie müssen möglicherweise den Prozess wiederholen, wenn der PDF-Code schwer zu lesen ist.



Problembehandlung

Die folgenden Tests sollten durchgeführt werden, wenn der linear imager nicht einwandfrei funktioniert.

1. Nachdem der linear imager durch den Hostrechner mit Strom versorgt wird (P.O.T), kann das Gerät nicht ohne eine eingeschaltete Spannungsversorgung durch das System funktionieren. Der linear imager kann nicht in Betrieb gesetzt werden, wenn das Gerät auf Fremdstrom läuft und dieser ausgefallen ist.
2. Wenn das Gerät mit Fremdstrom läuft, wechseln Sie die Stromversorgung und überprüfen Sie den linear imager nochmals.
3. Sollte der linear imager die Spannung vom Hostrechner erhalten (P.O.T.), schließen Sie den linear imager an einen anderen Host an und überprüfen Sie den linear imager nochmals.



4. Überprüfen Sie, ob das Schnittstellenkabel sicher mit dem linear imager verbunden ist. Setzen Sie sich mit Ihrem technischen Supportteam in Verbindung oder schlagen Sie im Handbuch für Ihr Hostsystem nach, um die einwandfreie Verbindung zum linear imager zu erörtern.
5. Überprüfen Sie, ob das Schnittstellenkabel sicher mit dem linear imager verbunden ist.
6. Überprüfen Sie, ob die Barcodes genügend Qualität aufweisen, damit Sie vom linear imager erfasst werden können. Zerknitterte, schmutzige oder angerissene Barcodes können dazu führen, dass vom linear imager gar nichts erfasst werden kann. Scannen Sie einen intakten Barcode, um die Lesefähigkeit des linear imagers zu überprüfen.

7. Stellen Sie sicher, dass der Schnittstellentyp des linear imagers mit Ihrem Host-Terminal kompatibel ist, indem Sie in Ihrem POS-Systemhandbuch und/oder in der linear imager Product Reference Guide nachschlagen, die sich auf der CD befinden, die mit dem linear imager geliefert wurde.



Bitte kontaktieren Sie entweder Ihren örtlichen Anbieter oder den Data-logic Kunden-Support-Dienst, wenn der linear imager noch immer nicht einwandfrei funktioniert.

Hochfrequente Störungen

Dieses Gerät erfüllt Teil 15 der FCC-Bestimmungen. Der Betrieb unterliegt den folgenden zwei Bedingungen:

1. Dieses Gerät verursacht keine schädlichen Störungen.
2. Dieses Gerät akzeptiert alle empfangenen Störungen, einschließlich Störungen, die einen nicht gewünschten Betrieb verursachen.

Dieser digitale Apparat der Klasse A erfüllt Canadian ICES-003.

Cet appareil numérique de la classe A est conforme à la norme NMB-003 du Canada.

LED Class

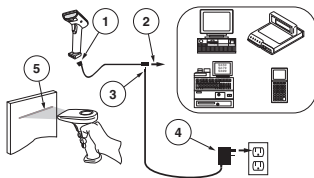
CLASS 1 LED PRODUCT APPARECCHIO LED CLASSE 1

LED KLASSE 1 APPAREIL A LED DE CLASSE 1

EN60825-1/All:1996

Installazione

Il QS6500 linear imager è un lettore portatile di facile utilizzo. La seguente figura illustra le fasi di installazione del linear imager. Spegnerne il computer prima di collegare il linear imager. Se necessario, consultare il manuale fornito unitamente al computer.



1. Collegare il cavo di interfaccia (I/F) al linear imager.
2. Collegare il cavo di interfaccia (I/F) alla porta di comunicazione del terminale.
3. Se necessario, collegare il cavo di alimentazione al connettore del cavo I/F. I lettori di tipo P.O.T. (Power Off the Terminal) non devono essere alimentati in quanto utilizzano l'alimentazione del terminale.
4. Se necessario, collegare il trasformatore di CA alla presa a muro.
5. Per verificare il funzionamento, puntare il linear imager in direzione di un codice a barre e premere il grilletto. Il linear imager dovrebbe emettere un unico tono per indicare che l'etichetta è stata letta con successo.

L'installazione del linear imager è terminata.

Alimentazione

Questi modelli devono essere alimentati con alimentatori omologati di classe II o classe III LPS (Limited Power Source, sorgente di corrente limitata).

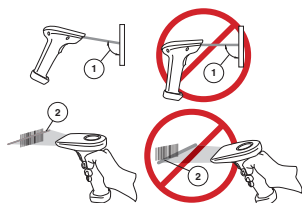
Affinché il certificato di sicurezza sia valido, le sorgenti di alimentazione di classe III devono essere conformi a IEC/EN60950-1 (serie EN 60335, EN60065 o relativi).

Tensione ingresso: 100 - 240 VAC Tensione uscita: 9 - 10 VDC

Consumo massimo: 2.0 A Potenza massima: 20 W

Come eseguire una lettura

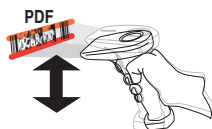
La figura sottostante illustra il modo corretto e quello non corretto di come effettuare la scansione di un codice a barre



1. Il linear imager deve essere puntato con un leggero angolo rispetto al codice a barre in modo che la luce riflessa dal barcode possa essere "vista" dal linear imager. Non puntare il codice tenendo il linear imager perpendicolare ad esso.
2. Si deve puntare il raggio in modo che esso copra l'intera superficie del codice a barre. Il linear imager non può leggere i dati del codice a barre senza vedere tutta l'etichetta.

Letture di codici a barre PDF417 (Solo per i modelli PDF)

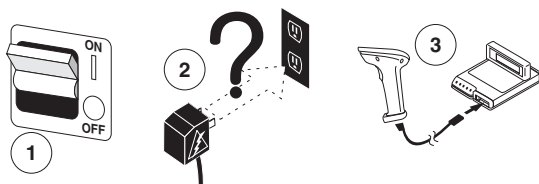
Per leggere una simbologia PDF, puntare il raggio in cima al codice a barre, e con movimento lento, attraversare il codice a barre dall'alto verso il basso. Sarà possibile udire una serie di scatti seguiti dal tono finale che viene emesso una volta letto tutto il contenuto del codice. Il processo è da ripetere se il codice PDF risulta difficile da leggere.



Risoluzione dei problemi

Eseguire i seguenti controlli in caso di cattivo funzionamento del linear imager:

1. Poiché il linear imager è alimentato solo dal terminale (P.O.T. Power Off the Terminal, alimentazione da terminale), esso non funziona quando il sistema è spento. Se il linear imager utilizza un'alimentazione esterna e questa è assente, il linear imager non funziona.
2. In caso di utilizzo di una fonte di alimentazione esterna, sostituirla con una fonte funzionante e controllare nuovamente il linear imager.
3. Se il linear imager viene alimentato dal terminale (P.O.T.), collegarlo ad un terminale funzionante e ripetere il controllo.



4. Verificare che il cavo di interfaccia sia saldamente collegato al terminale. Consultare il personale di supporto tecnico o il manuale del sistema utilizzato come terminale per verificare il corretto collegamento dello scanner.
5. Verificare che il cavo di interfaccia sia saldamente collegato al linear imager.
6. Verificare che la qualità delle etichette sia adatta al linear imager. Un'etichetta accartocciata, macchiata o strappata può impedire del tutto la lettura. Eseguire una scansione su un'etichetta in buono stato per verificare il corretto funzionamento del linear imager.

7. Assicurarsi che il tipo di interfaccia del linear imager sia compatibile con il terminale consultando il manuale del sistema POS utilizzato e/o la Guida di riferimento prodotto del linear imager presente sul CD fornito con il linear imager.



Se il linear imager continua a non funzionare correttamente, contattare il fornitore locale o il servizio di assistenza clienti di Data-logic.

Disturbi in radiofrequenza

Questo dispositivo è conforme alla sez. 15 delle norme FCC.
L'utilizzo è subordinato alle due condizioni seguenti:

1. Il dispositivo non deve causare interferenze dannose, e
2. Il dispositivo deve sopportare le interferenze captate, incluse quelle che possono determinare un funzionamento anomalo.

Questo dispositivo digitale di Classe A è conforme alle normative canadesi ICES-003.

Cet appareil numérique de la classe A est conforme à la norme NMB-003 du Canada.

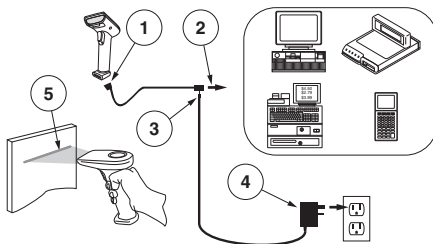
LED Class

CLASS 1 LED PRODUCT
LED KLASSE 1

APPARECCHIO LED CLASSE 1
APPAREIL A LED DE CLASSE 1
EN60825-1/All:1996

Instalación

El QS6500 linear imager para códigos de barras es un escáner manual muy fácil de utilizar. La siguiente figura muestra los pasos que se deben seguir para instalar el escáner. Apague la computadora host antes de conectar el linear imager. De ser necesario, consulte el manual del terminal host.



1. Conecte el cable de interfaz (I/F) al linear imager.
2. Conecte el cable I/F al puerto de comunicaciones del terminal.
3. Si corresponde, conecte el cable de alimentación al conector del cable I/F. Los linear imagers que se alimentan con la energía del terminal (P.O.T.) no necesitan a conectar con una fuente de alimentación.
4. Si es necesario, conecte el adaptador CA al tomacorriente de la pared.
5. Para verificar el funcionamiento, apunte el linear imager hacia un código de barras y apriete el gatillo. El linear imager debe emitir un solo bip, lo que indica que ha leído la etiqueta correctamente.

Con esto, queda completa la instalación del linear imager.

Conexión al Corriente

Se requiere fuente limitada de alimentación (LPS) alistada en la clase II o la clase III para estos modelos.

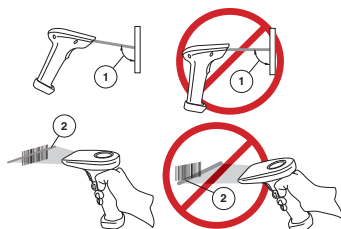
La certificación de seguridad solamente es válida si las enchufadas para fuente de alimentación clase III están aprobadas por IEC-EN60950-1 (serie EN 60335, EN 60065 o comparable).

Enchufada 100-240 VAC Despacho 9 - 10 VDC

Corriente máximo 2.0 A Poder máximo 20 W

Cómo leer

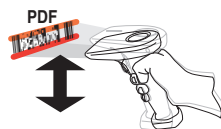
El diseño que aparece en seguida demuestra la manera correcta e incorrecta de rastrear un código de barras.



1. Se debe apuntar el "linear imager" con el menor ángulo posible para que la luz que se refleja del código de barras sea captada por el "linear imager." No coloque el linear imager en manera perpendicular al código de barras.
2. La luz directiva tiene que cruzar al totalidad del código de barras. El linear imager no puede leer los datos del código de barras si no ve la etiqueta completo.

Cómo escanear códigos de barras PDF417 (Únicamente para los modelos PDF)

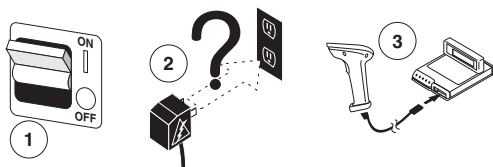
Para la lectura de un código de barras PDF417, apunta la luz directiva por el código de barra con movimiento constante, desde arriba hacia abajo. Deber oír una serie de tics, seguidos con un bip final cuando el linear imager haya descifrado completamente el contenido del código. Puede que usted necesite repetir este proceso, si el código PDF es difícil de leer.



Solución de problemas

Si el linear imager no funciona adecuadamente, se deben realizar estas pruebas:

1. Dado que el linear imager puede alimentarse de la computadora host (Alimentación a través de la energía del terminal, “P.O.T.”), no funcionará si el sistema no está encendido. Si el linear imager emplea una fuente de alimentación externa y esta fuente ha sufrido una falla operativa, el linear imager no funcionará.
2. Si se utiliza una fuente de alimentación externa, reemplácela por una fuente de alimentación que esté funcionando bien y vuelva a probar el linear imager.
3. Si el linear imager se alimenta con el terminal host (P.O.T.), conecte el linear imager a un host que esté funcionando bien y vuelva a probarlo.



4. Verifique si el cable de interfaz está bien conectado al host. Consulte a su personal de soporte técnico o consulte el manual del sistema host para verificar si el linear imager está bien conectado.
5. Verifique si el cable de interfaz está bien conectado al linear imager.
6. Controle si la calidad de las etiquetas es suficiente para que el linear imager pueda reconocerlas. Es posible que el linear imager no lea las etiquetas que están arrugadas, manchadas o rotas. Para verificar si el linear imager lee correctamente, páselo por una etiqueta que esté en buenas condiciones.
7. Verifique que el tipo de interfaz que emplea el linear imager sea compatible con el terminal host. Para esto, consulte el manual de su

sistema de punto de venta (POS) o la guía de referencia de producto que viene en el CD provisto con el escaner.



Si el linear imager no funciona de manera adecuado, comuníquese con su proveedor local o con el Servicio de Atención al Cliente de Datalogic.

Interferencia de radio frecuencia

Este unidad cumple con la Parte 15 de las Normas FCC (Comisión Federal de Comunicaciones de EE.UU.). Su funcionamiento está sujeto a las dos condiciones siguientes:

1. Esta unidad no podrá causar interferencia peligrosa, y
2. Esta unidad deberá aceptar cualquier interferencia recibida, incluyendo aquella interferencia que pudiese provocar una operación no deseada.

Este aparato digital de la clase A se conforma con ICES-003 canadiense.

Cet appareil numérique de la classe A est conforme à la norme NMB-003 du Canada.

LED Class

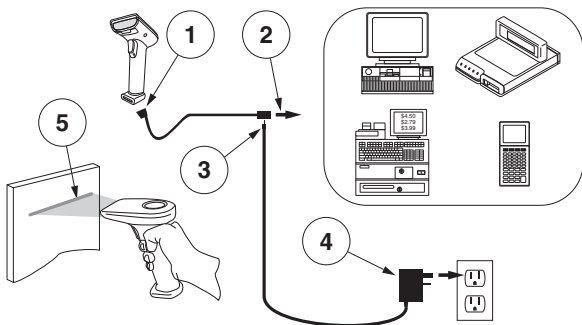
CLASS 1 LED PRODUCTAPPARECCHIO LED CLASSE 1

LED KLASSE 1 APPAREIL A LED DE CLASSE 1

EN60825-1/All:1996

Instalação

O QS6500 linear imager é um leitor portátil de fácil utilização. A figura seguinte mostra os passos para instalação do linear imager. Desligue o computador antes de conectar o linear imager. Consulte o manual do terminal caso necessário.



1. Conecte o cabo de interface (I/F) ao linear imager.
2. Conecte o cabo I/F à porta de comunicação do terminal.
3. Conecte o fio de energia ao conector do cabo I/F, caso necessário. Os linear imagers que usam o fornecimento de energia do terminal (power off the terminal - P.O.T.) não exigem um suprimento de energia.
4. Se necessário, conecte o adaptador CA/CC a tomada.
5. Para verificar a operação, aponte o linear imager para um código de barras e aperte o gatilho. O linear imager deve emitir um sinal de bip único, indicando que a etiqueta foi lida corretamente.

A instalação do linear imager está completa.

Adaptador CA/CC

Modelos podem ser classificados como Classe II ou Classe III, com Fonte de Energia Limitada (LPS).

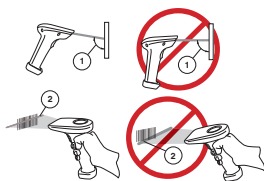
Para o certificado de segurança elétrica ser válido, uma fonte de entrada de energia Classe III precisa ser aprovada como IEC/EN60950-1 (EN 60335-serie, EN 60065 ou relevante).

Entrada: 100 - 240 V c.a. Saída: 9 - 10 Vc.c.

Corrente Max.: 2.0 A Potencia Max.: 20 W

Como operar o linear imager

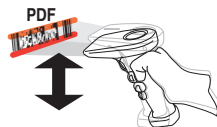
A figura abaixo indica as formas correta e incorreta de ler um código de barras.



1. O Linear Imager necessita ser direcionado ao código de barras com um pequeno ângulo, de forma que a luz que reflete na superfície do código de barras possa ser "vista" pelo Linear Imager. Não segure o linear imager perpendicularmente ao código de barras.
2. O feixe de posicionamento necessita cruzar toda a extensão do código de barras. O linear imager não pode ler o código de barras sem visualizar a etiqueta inteira.

Fazendo de leitura de Códigos de Barras PDF417 (Sómente modelos PDF)

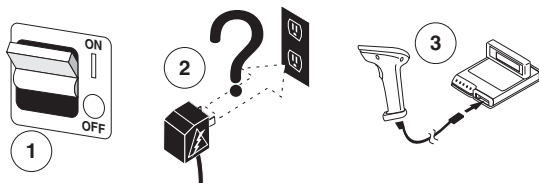
Para ler um código do tipo PDF417, aponte o feixe de posicionamento no topo do código e em um movimento devagar siga lendo o código da parte superior até a parte inferior. Você irá ouvir uma série de tiques, seguidos por um bip final, quando o conteúdo do código de barras tiver sido completamente decodificado. Pode ser que seja necessário repetir este processo caso tenha dificuldade de ler este código em PDF



Diagnóstico de Problemas

Se o linear imager não estiver operando adequadamente, as seguintes verificações devem ser feitas:

1. Visto que o linear imager pode receber sua energia do terminal que o hospeda (Power Off the Terminal—P.O.T.), este não irá operar sem que o sistema esteja ligado. Se o linear imager usa um suprimento de energia externo e este tiver falho, o linear imager não irá funcionar.
2. Se um suprimento de energia externo for usado, troque o suprimento de energia por um reconhecidamente bom e teste novamente o linear imager.
3. Se o linear imager recebe a energia do terminal (P.O.T.), conecte o linear imager a um terminal reconhecidamente bom e teste novamente.



4. Verifique se o cabo de interface está ligado de forma segura ao terminal. Consulte seu suporte técnico ou o manual do sistema do terminal para verificar a conexão apropriada para o linear imager.
5. Verifique se o cabo de interface está ligado de forma segura ao linear imager.
6. Cheque se as etiquetas são de qualidade suficiente para serem reconhecidas pelo linear imager. Etiquetas rasgadas, sujas ou molhadas podem impedir que o linear imager faça a leitura completa. Faça a leitura com uma etiqueta reconhecidamente em bom estado para checar a operação de leitura do linear imager.
7. Certifique-se de que o tipo de interface do linear imager é compatível com o terminal, consultando o manual de sistema POS e/ou

o Guia de Referência do Produto do linear imager, encontrado no CD incluso em seu linear imager.



Caso o linear imager ainda não funcione corretamente, contate seu fornecedor local ou os Serviços de Suporte ao Cliente Datalogic.

Interferência de Radio – Frequência

Este dispositivo concorda com a Parte 15 das Regras FCC. A operação é sujeita às seguintes duas condições:

1. Este dispositivo não deve causar interferências que tragam risco, e
2. Este dispositivo deve aceitar quaisquer interferências recebidas, incluindo interferências que possam causar operações não desejadas.

Este aparelho digital de Classe A é conforme a norma Canadense ICES-003.

Cet appareil numérique de la classe A est conforme à la norme NMB-003 du Canada.

Classe Do LED

PRODUTO LED - CLASSE 1

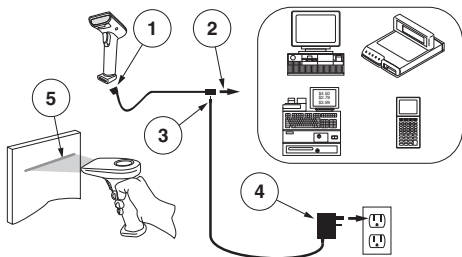
CLASS 1 LED PRODUCTAPPARECCHIO LED CLASSE 1

LED KLASSE 1APPAREIL A LED DE CLASSE 1

EN60825-1/All:1996

安装

QuickScan QS6500 线性扫描器安装和使用都十分容易。下面的图演示的是安装步骤。在接线前首先关闭主计算机。如果需要，请查阅主机终端手册。



1. 将连接电缆与线性扫描器相连。
2. 将连接电缆与终端的通讯口相连。
3. 如果需要，将电源线与连接电缆的连接器的连接器相连。使用使用终端供给电源（P. O. T.）的线性扫描器不需要电源。
4. 如果需要，将交流电适配器与墙面插头相连。
5. 要检查操作情况，将线性扫描器对准条形码，然后扣动按钮。线性扫描器应当发出一声“滴”音，表明条形码扫描成功。

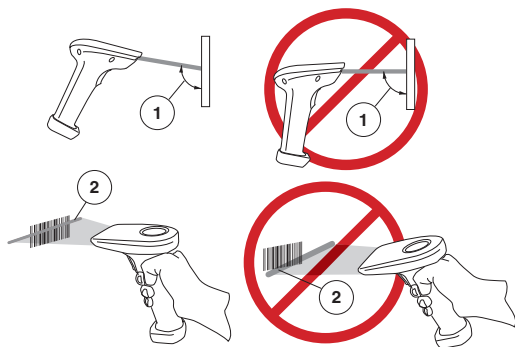
至此，线性扫描器安装完毕。

关于电源

电源块要求class II或class III有限电源。为保证安全证书有效，class III输入源必须满足IEC/EN60950-1(EN 60335-series, EN 60065 or relevant)标准。
输入：100-240 VAC 输出：9 - 10 VDC
最大电流：2.0A 最大功率：20W

如何扫描

下图演示的是正确的和错误的扫描条码的方法。



1. 必须将线性扫描器以稍小的斜角对着条码扫描，这样条码上反射的光才可以被线性扫描器“看到”。不要将扫描器垂直对着条码。
2. 扫描光线应当对准整个条码标签，否则扫描器不能读取条码数据。

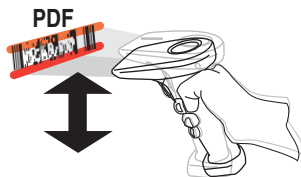
扫描 PDF417 条码（仅适用于 PDF 机型）

要扫描 PDF417 条码，将扫描光线对准条码的顶部，然后平滑地向下扫描条码。在一系列的滴答声后，有一声“滴”，确认条码内容被完全解码。为了成功扫描，您可能需要扫描条码标签几次。

故障排除

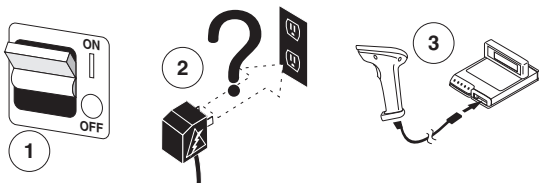
如果线性扫描器出现故障，应当作如下的检查：

1. 由于线性扫描器从主计算机（终端供给电源 P. O. T.）上获得电力，



如果系统电源没有接通，则扫描器就不能工作。如果线性扫描器使用外部电源，而外部电源出现故障，则扫描器也不会工作。如果使用的是外部电源，换上完好的电源，然后测试线性扫描器。

2. 如果线性扫描器是从主机 (P. O. T.) 获得电力，将线性扫描器与完好的主机相连，然后测试扫描器是否工作。



3. 检查连接电缆与主机连接的是否牢固。请教技术支持人员或查阅主机系统手册，以检查线性扫描器的接线是否正确。
4. 检查连接电缆与线性扫描器的连接是否牢固。
5. 检查条码是否足够清晰、易于扫描器识别。皱的、脏的或破损的条码标签扫描器是不能识别的。扫描一个好的条码，然后检查扫描器是否能正确读取。
6. 通过查阅您的 POS 系统手册或随机携带的 CD 中包含的线性扫描器《产品参考手册》，确认线性扫描器的连接线型号与主机终端兼容。



如果线性扫描器仍然不能工作，与您当地的供应商或 Datalogic 的客户服务部联系。

符合法规之声明

该设备符合第 15 章的有关规定。其操作符合下列条件：

1. 该设备不会引发有害的干扰；并且
2. 该设备必须接受任何接收到的干扰，包括可能引发错误的干扰。

该 A 级数字设备符合加拿大 ICES -003。

Cet appareil numérique de la classe A est conforme à la norme NMB-003 du Canada.

LED 等级

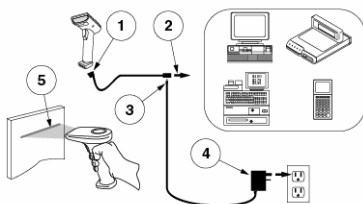
1 级 LED 产品 1 级 APPARECCHIO LED

LED KLASSE 1 APPAREIL A LED DE CLASSE 1

EN60825-1/A11:1996

インストール

QuickScan® QS6500 リニアイメージャーは、簡単にインストール、ご使用いただけます。以下の図はインストール手順の説明です。接続する前にホストコンピュータをオフにしてください。必要に応じてターミナルのマニュアルを参照してください。



1. インターフェイス (I/F) ケーブルをリニアイメージャーに接続します。
2. インターフェイス (I/F) ケーブルをターミナルの通信ポートに接続します。
3. 必要に応じて電源コードを I/F ケーブルコネクタに接続してください。ターミナル (P. O. T.) からの電源を使用するリニアイメージャーは、外部電源を必要としません。
4. 必要に応じて AC アダプタを壁コンセントに差し込んでください。
5. バーコードに向けてリニアイメージャーのトリガーを引いて、正しく作動するか確認してください。リニアイメージャーはビープ音を一回発して、ラベルがスキャンされたことを知らせます。
6. これでリニアイメージャーのインストールが完了しました。

電源装置

このモデルはリステッドクラス II かクラス III のどちらかの限られた電源 (LPS) を必要とします。

安全証明が有効であるためには、クラス III の入力電源が IEC/E N60950-1 (EN 60335

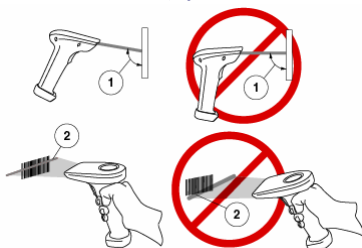
シリーズ、EN60065、もしくは同等)に承認されなければならなりません。

入力: 100 - 240 VAC 出力: 9 -10 VDC

最大. 電流: 2.0A 最大. 電力: 20W

スキヤンの仕方

以下の図は、バーコードの正しいスキヤンの仕方と間違っただスキヤンの仕方を説明しています。



1. バーコードに反射した光がリニアイメージャーによって認識されるように、リニアイメージャーは、バーコードに対してわずかな角度で当ててください。リニアイメージャーをバーコードに対して垂直に持たないでください。
2. 照準光は、ラベル全体を当てなければなりません。ラベル全体がを当てないとリニアイメージャーはバーコードを読み取ることができません。

PDF417 バーコードのスキヤン (PDF モデル限定)

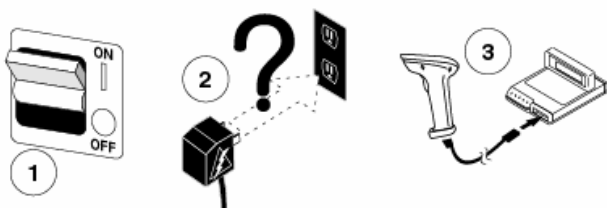
PDF417バーコードを読み取るには、照準光をバーコードの最上部に当てて、バーコードの上から下までをなめらかな動きでスキヤンします。一連の作動音の後、バーコードの解読が完了したことを告げる最後のピープ音が鳴ります。コードの読み取りが難しい場合は、この手順を繰り返さなければならない場合があります。



トラブルシューティング

リニアイメージャーが正しく作動しない場合は、以下の確認作業を行ってください。

1. リニアイメージャーはホストコンピュータ (パワーオフターミナル - P.O.T.) から電力を引いて作動させることができ、その場合はシステム電源がオンになっていないとリニアイメージャーは作動しません。外部電源に接続してリニアイメージャーを作動させる場合、その電源装置が停電になっているとリニアイメージャーは作動しません。
2. 外部電源をお使いの場合は、信頼できる電源装置に替えてからリニアイメージャーを再テストしてください。
3. リニアイメージャーがホスト (P.O.T.) から電力を引いている場合は、リニアイメージャーを信頼できるホストに接続してから再テストしてください。



4. インターフェース・ケーブルがホストにしっかりと接続されていることを確認します。リニアイメージャーの正しい接続方法については、テクニカルサポートの担当者にお問い合わせいただくか、ホストのシステムマニュアルを参照してください。
5. インターフェース・ケーブルがリニアイメージャーにしっかりと接続されているか確認してください。
6. ラベルの状態がリニアイメージャーが認識するのに十分な状態であることを確認してください。ラベルのシワや汚れ、破れなどは、リニアイメージャーが全く読み取りをしな原因になります。状態のよいラベルをスキャンして、リニアイメージャーの読み取り機能をテストしてください。

7. リニアイメージャーのインターフェイスのタイプがホストターミナルと互換性があるか確認します。確認方法は、POSシステムマニュアルを参照するか、ならびに/または付属のCDに入っているリニアイメージャー製品ガイドをご覧ください。



上記の方法を実行してもリニアイメージャーが正しく作動しない場合は、お近くのサプライヤーまたはDatalogicカスタマーサポートサービスにご連絡ください。

適合性について

本製品は、パート15

の規制に適合しています。操作は以下の条件に従います。

1. この装置は有害な干渉をおこさない。
2. この装置は、誤作動を起こす可能性がある干渉を含む、受信したあらゆる干渉を受け入れなければならない。

本製品は、カナダICES - 003に準拠したクラスAデジタル装置です。
Cet appareil numérique de la classe A est conforme à la norme NMB-003 du Canada.

LED Class

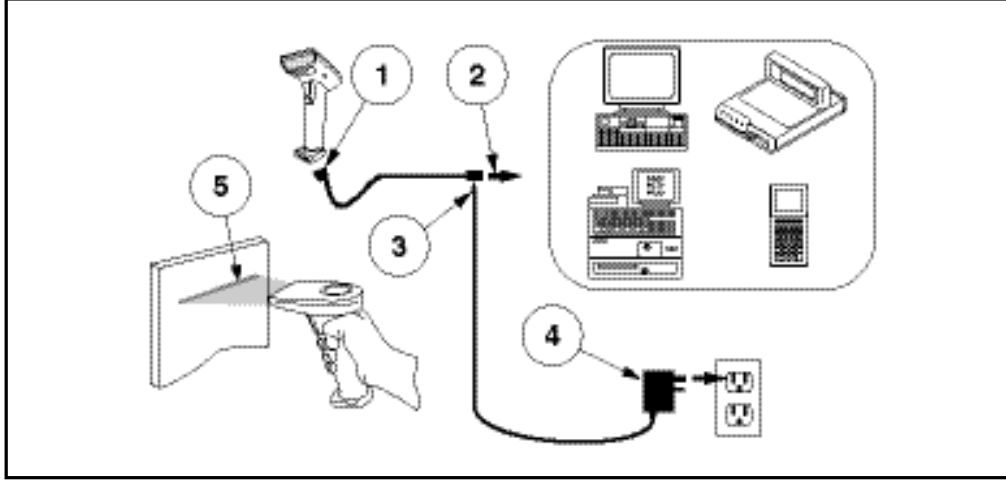
CLASS 1 LED PRODUCT APPARECCHIO LED CLASSE 1

LED KLASSE 1 APPAREIL A LED DE CLASSE 1

EN60825-1/All:1996

Kuruluş

QuickScan® QS6500 linear imager 'ın kuruluđu ve kullanımı çok kolaydır. Ađağıdaki resim bir kuruluđu gerekleřtirmenin ařamalarını gstermektedir. Baęlantıyı yapmadan nce okuyucunun baęlanacaęı bilgisayarı kapatın. Gerekirse bilgisayarın veya terminalin kullanım kitapına bakın.



1. Arayüz (I/F) kablosunu linear imager okuyucuya takın.
2. Arayüz (I/F) kablosunu terminal'in COM Portuna takın.
3. Gerekliyorsa elektrik kablosunu arayüz (I/F) kablosunun konnektrne takın. Baęlandığı terminalin elektrięini kullanan (P.O.T) Linear imagerlar iin ayrıca bir elektrik beslemesine gerek yoktur.
4. Eęer gerekirse de AC elektrik adaptrn duvardaki prize takın.
5. Okuyucunun alıřtıęını doęrulamak iin, okuyucuyu herhangi bir barkoda doęru tutun ve tetięe basın. Linear imager okuyucu etiketin bařarıyla okunduęunu belirten tek bir " bip " sesi ıkarmalıdır.

Linear imager okuyucunuzun kuruluđu tamamlanmıřtır.

G Kaynaęı

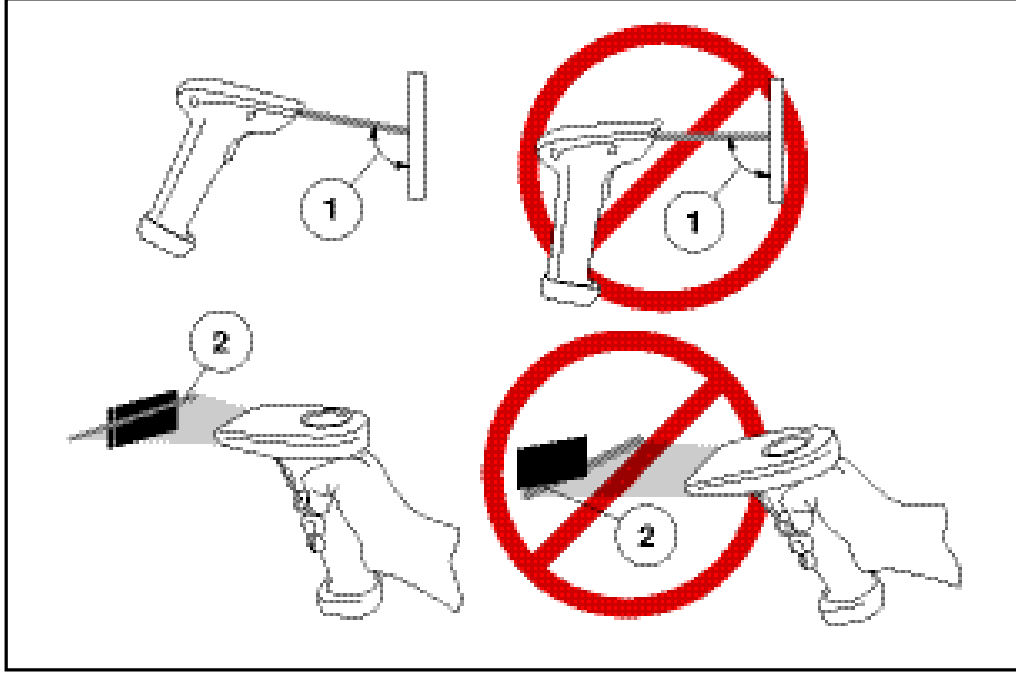
Okuyucular modeline gre ya " Class II " yada " Class III" olarak listelenmiř Kısıtlı G Kaynaęı'na (LPS) gereksinim duyarlar. Gvenlik Sertifikasının geerli olabilmesi iin, " Class III " g kaynaęının IEC/EN60950-1 (EN 60335-serisi, EN 60065 veya benzeri) onaylanması gerekir.

Giriř Akımı : 100 - 240 VAC ıkıř Akımı : 9 - 10 VDC

Max. Akım : 2.0 A Max. G : 20 W

Okuma

Aşağıdaki şekil bir barkod okutmanın doğru ve yanlış yönlerini bize gösteriyor.



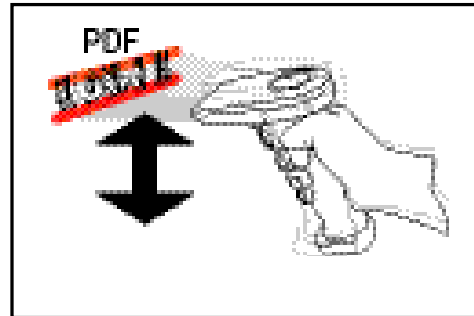
Linear imager okuyucu, barkod etiketinden yansıyan ışığı “ görebilmesi ” için etikete küçük bir açıyla doğrultulmalıdır. Kesinlikle okuyucuyu barkoda dik açıyla doğrultmayın.

Okuyucunun ışını etiketin tamamının üzerinden geçmelidir. Okuyucu etiketin tamamını görmeden barkodu okuyamaz.

PDF417 Barkodları okuma (SADECE PDF modelleri)

Bir PDF417 barkodu okuyabilmek için , hedef ışınını barkodun üst kısmına nişan alın, ve yumuşak bir hareketle , barkodu yukarıdan aşağıya doğru okutun. Barkodun içeriği tamamen çözümlendikten sonra bir seri “tık” sesinden

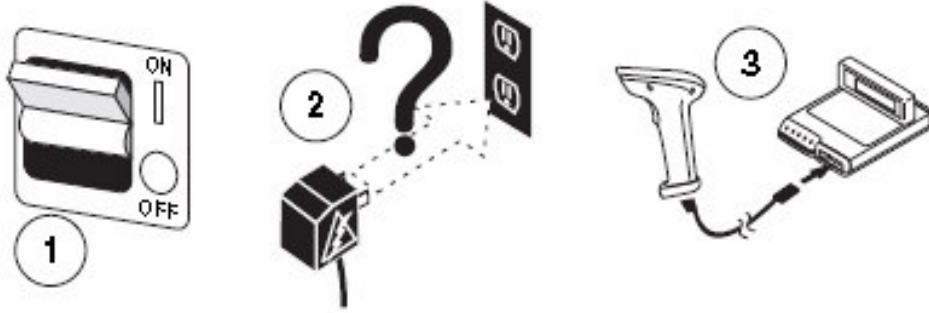
takiben son bir “ bip “ sesi duyacaksınız. Eğer PDF güç okunan bir kod ise bu işlemi tekrarlamamız gerekebilir.



Sorun Giderme

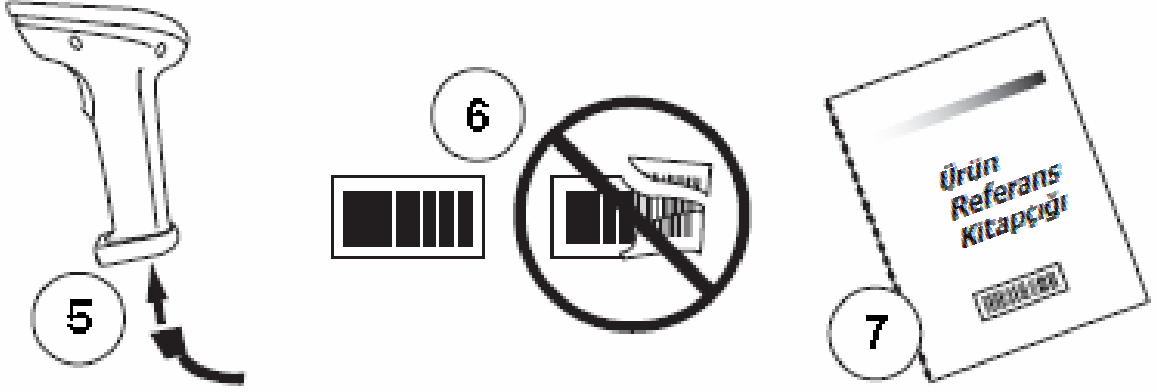
Eğer okuyucunuz düzgün çalışmıyor ise, aşağıdaki kontroller yapılmalıdır.:

1. Okuyucu elektriğini bağlı olduğu bilgisayardan aldığı (Power Off Terminal – P.O.T.) için bu bilgisayara elektrik gelmeden çalışamaz. Eğer okuyucu harici bir güç kaynağı kullanıyor ise , ve bu kaynak bozuk ise yine okuyucu çalışmaz.
2. Eğer harici bir güç kaynağı kullanılıyor ise, bunu çalıştığından emin olduğunuz başka bir güç kaynağı ile değiştirin ve okuyucuyu tekrar test edin.
3. Eğer okuyucu elektriğini bağlı olduğu bilgisayardan alıyor (P.O.T.) ise, okuyucuyu çalıştığından emin olduğunuz başka bir bilgisayara bağlayıp tekrar test edin.



4. Arayüz kablosunun güvenli bir şekilde bilgisayara bağlandığını doğrulayın. Okuyucu için en uygun bağlantıyı doğrulamak için teknik destek personeline danışın veya bilgisayarın kullanım kitapçığına bakın.
5. Arayüz kablosunun güvenli bir şekilde okuyucuya bağlandığını doğrulayın.
6. Okuyucu tarafından algılanabilmeleri için etiketlerin yeterli kalitede olduğunu kontrol edin. Buruşuk, lekeli, veya yırtık etiketler, okuyucunun hiçbir şekilde okuyamamasına neden olur. Okuyucunun okuyup okumadığını kontrol etmek için okunabilirliğinden emin olduğunuz bir etiketi okutun.

7. Okuyucununuzun arayüz tipinin bağlandığı bilgisayar ile uyumlu olduğundan emin olmak için okuyucu ile beraber gelen CD içerisindeki Ürün Referans Kitapçığına , ve/veya POS sistem kitapçığına bakınız.



Eğer okuyucunuz buna rağmen düzgün çalışmıyor ise , ürünü aldığınız firmaya yada Datalogic Müşteri Destek Hizmetlerine başvurunuz.

Uygunluk Beyanı

Bu cihaz Kısım 15 kurallarına uygundur. Kullanım aşağıdaki koşullarda olabilir :

1. Bu cihaz zararlı sinyal çakışmasına veya parazite yol açmayabilir; ve
2. Bu cihaz istenmeyen çatışmalara yol açanlar da dahil hertürlü paraziti onaylar.

Bu A sınıfı dijital cihaz Kanada ICES -003 normu ile uyumludur.

LED Sınıfı

CLASS 1 LED ÜRÜNÜ

EN60825-1/ Tüm : 1996

NOTES

NOTES

DECLARATION OF CONFORMITY



Datalogic hereby declares that the Equipment specified below has been tested and found compliant to the following Directives and Standards:

Directives: 89/336/EEC EMC
73/23/EEC Low Voltage

Standards: EN55022-B:1998 - Generic Emissions
EN55024:1998/2001 - Generic Immunity - ITE
EN60950:2000 - ITE Safety
EN60825-1/A2:2001 - LED Safety
EN61000-3-2:2000 - Harmonic Current
EN61000-3-3:1994 - Voltage Fluctuation/Flicker

Equipment Type: Handheld Barcode Scanning Equipment

Products: QuickScan 6500 Plus (QS6500)

Placed into EU Service: April 2007 under the Datalogic trademark.
Nov. 2004 under the PSC trademark.

Responsible Manufacturer: Datalogic Scanning, Inc. 959 Terry St. Eugene, OR USA



Australia

Datalogic Scanning Pty Ltd
Telephone: [61] (2) 9870 3200
australia.scanning@datalogic.com

France and Benelux

Datalogic Scanning Sarl
Telephone: [33].01.64.86.71.00
france.scanning@datalogic.com

Germany

Datalogic Scanning GmbH
Telephone: 49 (0) 61 51/93 58-0
germany.scanning@datalogic.com

India

Datalogic Scanning India
Telephone: 91- 22 - 64504739
india.scanning@datalogic.com

Italy

Datalogic Scanning SpA
Telephone: [39] (0) 39/62903.1
italy.scanning@datalogic.com

Japan

Datalogic Scanning KK
Telephone: 81 (0)3 3491 6761
japan.scanning@datalogic.com

Latin America

Datalogic Scanning, Inc
Telephone: (305) 591-3222
latinamerica.scanning@datalogic.com

Singapore

Datalogic Scanning Singapore PTE LTD
Telephone: (65) 6435-1311
singapore.scanning@datalogic.com

Spain and Portugal

Datalogic Scanning Sarl Sucursal en
España
Telephone: 34 91 746 28 60
spain.scanning@datalogic.com

United Kingdom

Datalogic Scanning LTD
Telephone: 44 (0) 1923 809500
uk.scanning@datalogic.com



www.scanning.datalogic.com

Datalogic Scanning, Inc.

959 Terry Street
Eugene, OR 97402
USA
Telephone: (541) 683-5700
Fax: (541) 345-7140



R44-2815 (Rev. C)